

Impact Report

The Baby Fold

The Baby Fold

The Baby Fold's Mission

The Baby Fold builds positive futures with children and families while reflecting the Christian principles of love, hope, and healing.

Our Vision

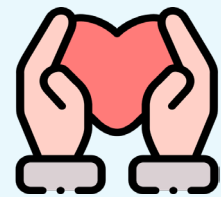
Transforming children's lives through strong family and community partnerships.



Values of The Baby Fold



Integrity



Stewardship



Diversity and
Inclusion



Teamwork



Excellence



Respect



A Message From

President and CEO Clete Winkelmann

In the tapestry of society, children are the threads that weave the future. Yet, for countless youth, the fabric of their lives has been marred by adversity, trauma, and developmental concerns that threaten their emotional well-being and potential for a healthy future.

Since 1902, The Baby Fold has stood in the gap for vulnerable children, investing in their lives to cultivate individual and community resiliency. Today, Central Illinois looks to The Baby Fold to provide consistent, unwavering support to over 1,200 children and their families each year through individualized, healing-focused care.

Our commitment to lasting change is evident in our diverse menu of life-critical programs and services. From foster care to adoption support, special education, intact family services, and community schools, our experts navigate each child's unique circumstance, and provide tailored interventions. Beyond treatment, we shape positive trajectories through prevention programs including Healthy Start and Caregiver Connections that significantly enhance social and emotional development.

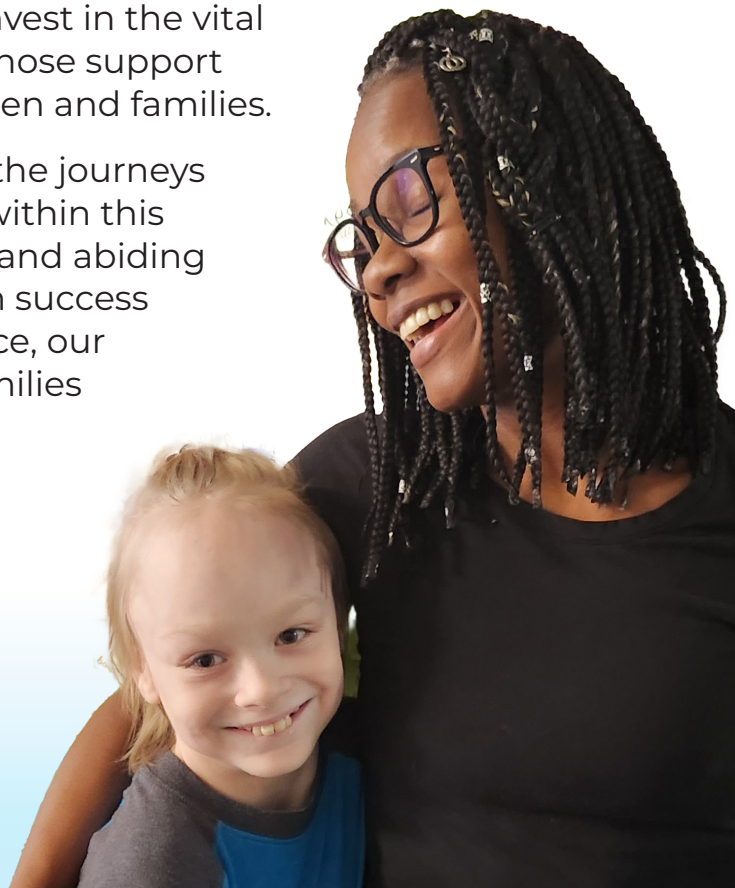
Engaging in the community for over 120 years, we must also acknowledge the influence that generosity has on The Baby Fold's success. Individuals, organizations, and businesses who trust and invest in the vital work of The Baby Fold are honored partners whose support allow us to heal the hearts and homes of children and families.

As you read, I encourage you to envision the journeys behind the collection of statistics and figures within this impact report. They are a testament to a deep and abiding commitment to children and their future. Each success proves that with the right support and guidance, our community's most vulnerable children and families can blossom.



Clete Winkelmann

President and CEO of The Baby Fold



Adoption

Support and Preservation



The Baby Fold's Adoption Support and Preservation program is dedicated to assisting families with adopted children under the age of 18. In times of family challenges, we provide comprehensive in-home support, consultation, resources, respite, and professional therapy—at no expense to the families involved. Our unwavering commitment is to help stabilize children and families, ensuring that parents can remain committed to their children.

97%

of families remained intact

93%

of families were offered services to meet immediate needs

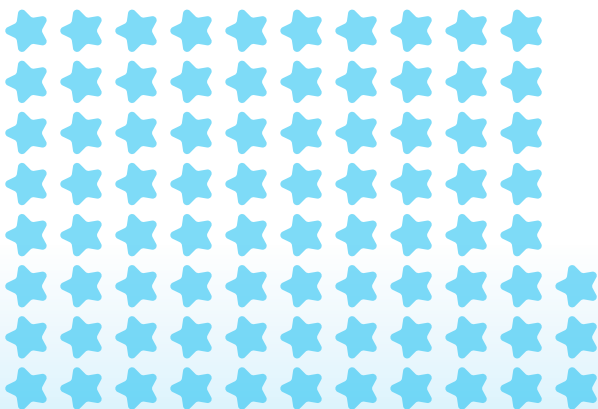
87%

of families had increased family functioning

Respite Programs

Respite services allow children and families to experience renewal and recovery from the many challenges they face.

Families offered Respite: **83**



**4,294
Hours**

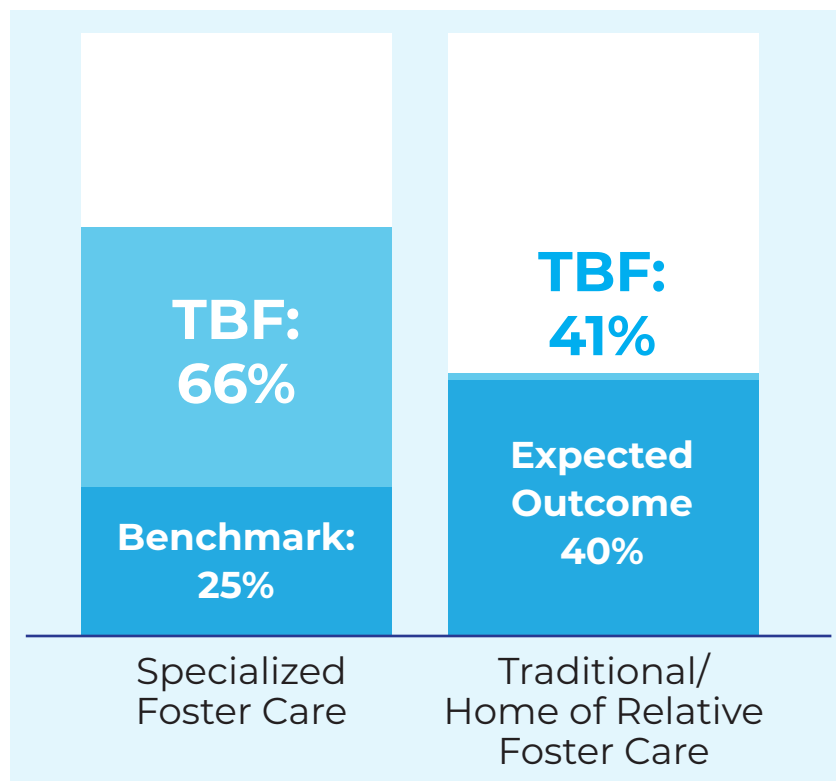
of Respite Camp provided



Foster Care

Traditional, Specialized, Home of Relative

The Baby Fold's foster care programs provide safe, nurturing home environments for children. The Illinois Department of Children and Family Services (DCFS) refers families to The Baby Fold at a time of crisis. Our mission is to offer a caring and stable place for these children until family reunification or another permanent living arrangement can be made.



Youth served in after care and supportive services: **36**

Record-Setting Permanency Rates

The Baby Fold has more than doubled the DCFS benchmark for permanency rates for youth in specialized foster care and exceeded the DCFS benchmark for youth in traditional foster care.

11 Youth served in Specialized Foster Care



177 Youth served in Traditional/Home of Relative Foster Care

“[The Baby Fold] is a gold standard and the true meaning of being Child Welfare workers. Thank you for this dedication and your continued work with children and families in our community.”

– Associate Deputy Director, Illinois DCFS

Hammitt Elementary

Special Education Programs

The Baby Fold's Hammitt Schools serve students from 24 school districts throughout Central Illinois. Hammitt Elementary School serves children age K-12 when their severe emotional/behavioral or communicative needs exceed what their public schools can provide.

Elevating Futures:

100%

of children have maintained their placement

100%

of children have excellent attendance rates

100%

of children are enrolled in school

Below are the objectives that showed positive progress.

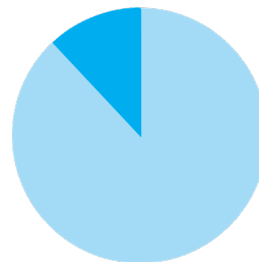
Speech/Language: **88%**

Academics: **86%**

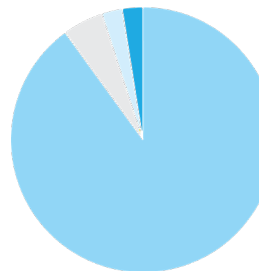
Social/Emotional: **76%**

Functional: **81%**

Student Makeup



88% Male
12% Female



90% White
5% Hispanic
2.5% Black African American
2.5% Black Interracial

“Great communication! I always knew how my student’s day was and what was happening; the teacher challenged him academically and really got through to him - **very happy with the services received!**”

-Parent of a Hammitt Student

Hammitt Jr.-Sr. High

Special Education Programs

Students at Hammitt Junior-Senior High School (age 13-21) are referred to the program by their local public school district, based on their need for more intensive special education services to achieve success in school.

This year, 99 students were served at HJSHS with individualized learning programs, therapeutic supports, flexible curriculums, behavior intervention strategies, and more.



Elevating Futures:

90%+

of students passed a vocational education course for graduation credits

100%

of students reported satisfaction with their Hammitt School services

83%

of students can apply social-emotional skills learned at Hammitt

Below are the objectives that showed positive progress.

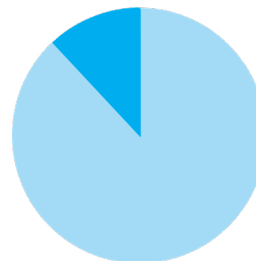
Speech/Language: **78%**

Academics: **77%**

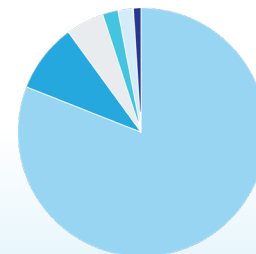
Social/Emotional: **83%**

Functional: **65%**

Student Makeup



87% Male
13% Female



81% White
9% Black African American
5% Multi-Racial
2% Hispanic
2% Other
1% Native Alaskan/
American Indian

Healthy Start

Early Intervention Program



The Baby Fold's Healthy Start program is a voluntary program designed to build safe and loving environments for first-time or young families.

A Support Worker meets in the home bi-weekly throughout pregnancy and weekly during the first nine months of the baby's life. We identify family strengths and needs, establish goals, and link families to community resources. Parents can participate in home visiting services until their child turns five years old.

100%

of clients received prenatal health care

91%

of children completed developmental screens at least once a year

95%

of prenatal clients received education on prenatal care, labor, and childbirth

36

events were held to promote healthy family engagement and parenting interactions.

Healthy Start Specializes in:

- Child Development Support
- Family Engagement
- Parental Support



Community Schools

Partnership with Unit 5



Community Schools is a strategy and framework that transforms a school into a place where educators, local community members, families, and students work together to strengthen conditions for student learning and healthy development. As partners, they organize in- and out-of-school resources, supports, and opportunities so students and their families thrive.

The Baby Fold's community School Coordinators are embedded within partner school sites with a focus on four primary pillars.

The Four Pillars of Success

Expanded and Enriched Learning Time and Opportunities

905

students served in
enrichment tutoring
and small groups

Active Community and Family Engagement

4,438

number of attendees at
**40 family engagement
events** throughout the year

Integrated Student Supports

100%

of student and family resource
requests met by community
school coordinators

Collaborative Leadership and Practices

100%

of public school staff survey
respondents were highly
satisfied with The Baby Fold's
Community Schools services

Caregiver Connections

Serving 19 counties, The Baby Fold's Caregiver Connections Program provides consultation, training, and support services to providers in family childcare, preschools, and home care settings. Our staff identify children whose behavior or social-emotional wellbeing may be in need of further attention and trains caregivers on teaching strategies and supports.

The Baby Fold also offers training and professional development opportunities to childcare providers at their request on a variety of topics related to development and mental health in young children.

141

Referrals made

148

Hours of training provided

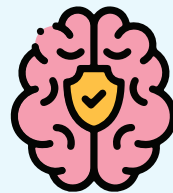
143

Hours of consultation provided

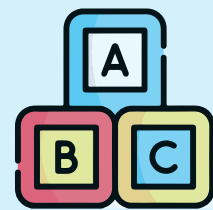
Trainings Provided:



Addressing Challenging Behavior



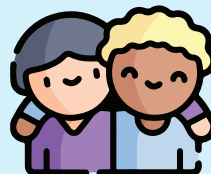
Trauma Informed Care



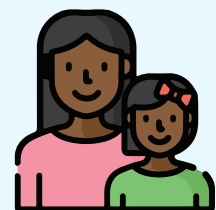
Child Development



Culture and Diversity



Importance of Healthy Relationships



Attachment Theory

Training Programs

Training, Consulting, Certification

The Baby Fold offers in-service training for teachers in area school districts, and professional staff who work with children in the community.

Hammitt School staff provide workshops in a variety of specialty areas and have custom-designed training programs depending on need. School staff also offer child-specific consultation to school districts that request assistance.

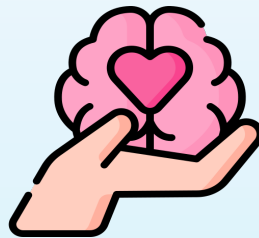
As a well-respected leader in the area of attachment and trauma training, The Baby Fold offers an Attachment and Trauma Fellowship and Certification Program with the goal of helping individuals and providers offer the highest possible level of care to children and families.

With the support of the Karin Purvis Institute for Child Development, The Baby Fold began a statewide collaboration known as “Trust Based Relational Intervention (TBRI) Illinois: Connecting to Collaborate” in 2023.

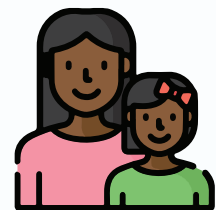
Trainings Available at The Baby Fold Include:



Crisis Intervention



Reducing Secondary Traumatic Stress



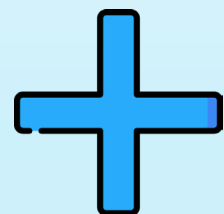
Assessing Attachment



Trauma Informed Agencies



Trust-Based Relational Intervention

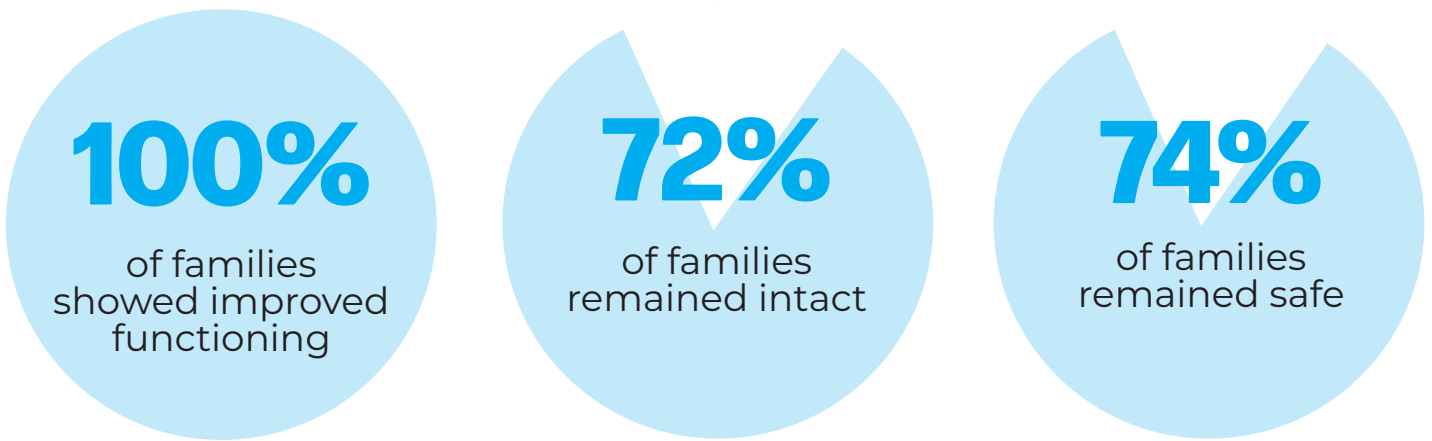


And More!

Intact Family Services

Intact Family Services is a short-term in-home community-based intervention program (6-9 months) that works with families who have come to the attention of the Illinois Department of Children and Family Services (DCFS) and have been indicated by DCFS for child abuse and/or neglect.

The program is designed to assure the safety and well-being of children by assisting families in addressing the issues that gave rise to the indicated report with the goal of maintaining the children safely in the home. The Baby Fold helps families assess their strengths and needs, set goals, identify resources, learn new skills, and change behaviors that put their children at risk.



Families Receiving Care in Intact Family Services: **68**



Join Our Mission

Since 1902, The Baby Fold has led child welfare efforts to heal children and families and develop stronger, more vibrant communities through our expansive, proactive, and trauma-informed programs and services.

For over 120 years, The Baby Fold has been entrusted with generous gifts of all varieties to improve the lives of children. You can make a difference today with your financial support.

**Join us
and change
the life
of a child.**

SCAN TO SUPPORT



THE BABY FOLD

- Stocks/Securities
- Farmland/Property
- Donor-Advised Funds
- Estate Gifts
- IRA Charitable Rollover
- Cryptocurrency
- Employer Gift Match

"Thank you all! I am just so grateful for all that you do for these kids, your services are so needed and the job so difficult and your impact is so great!"

"Love you all! If it wasn't for you guys, [my son] wouldn't be where he is today."

"My son is on the autism spectrum. Baby Fold has been a huge blessing in our lives. We can never repay the debt we owe your organization."

For information or help with a special gift, contact Sam Guillory at sguillory@thebabyfold.org or (309) 451-7202.

The Baby Fold
108 E. Willow Street
Normal, IL 61761

www.thebabyfold.org
EIN: 37-0673453

Gold
Transparency
2023

Candid.

Charity
Navigator



+ FOUR-STAR +

